

SELECT HAZARD ANALYSIS WORKSHOP SLIDES

TEST FIXTURE PERFORMANCE IS A LIMITED METRIC OF HAZARD POTENTIAL

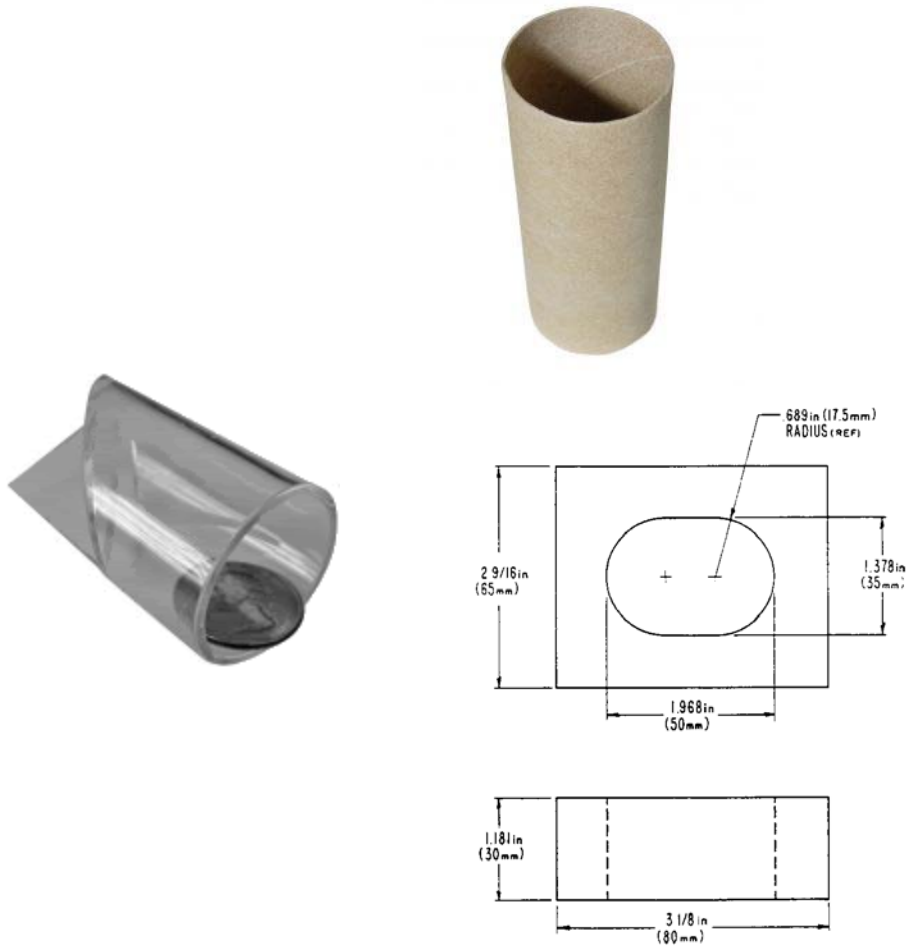
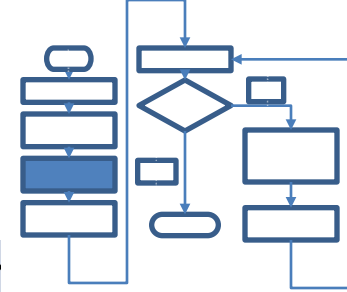


FIG. 15 Rattle Test Fixture

- Derived from oral tract/facial geometry analysis
- Based on general population data
- Behavioral analysis is not a part of test

CHOKING HAZARDS COME IN IN MANY SHAPES AND SIZES



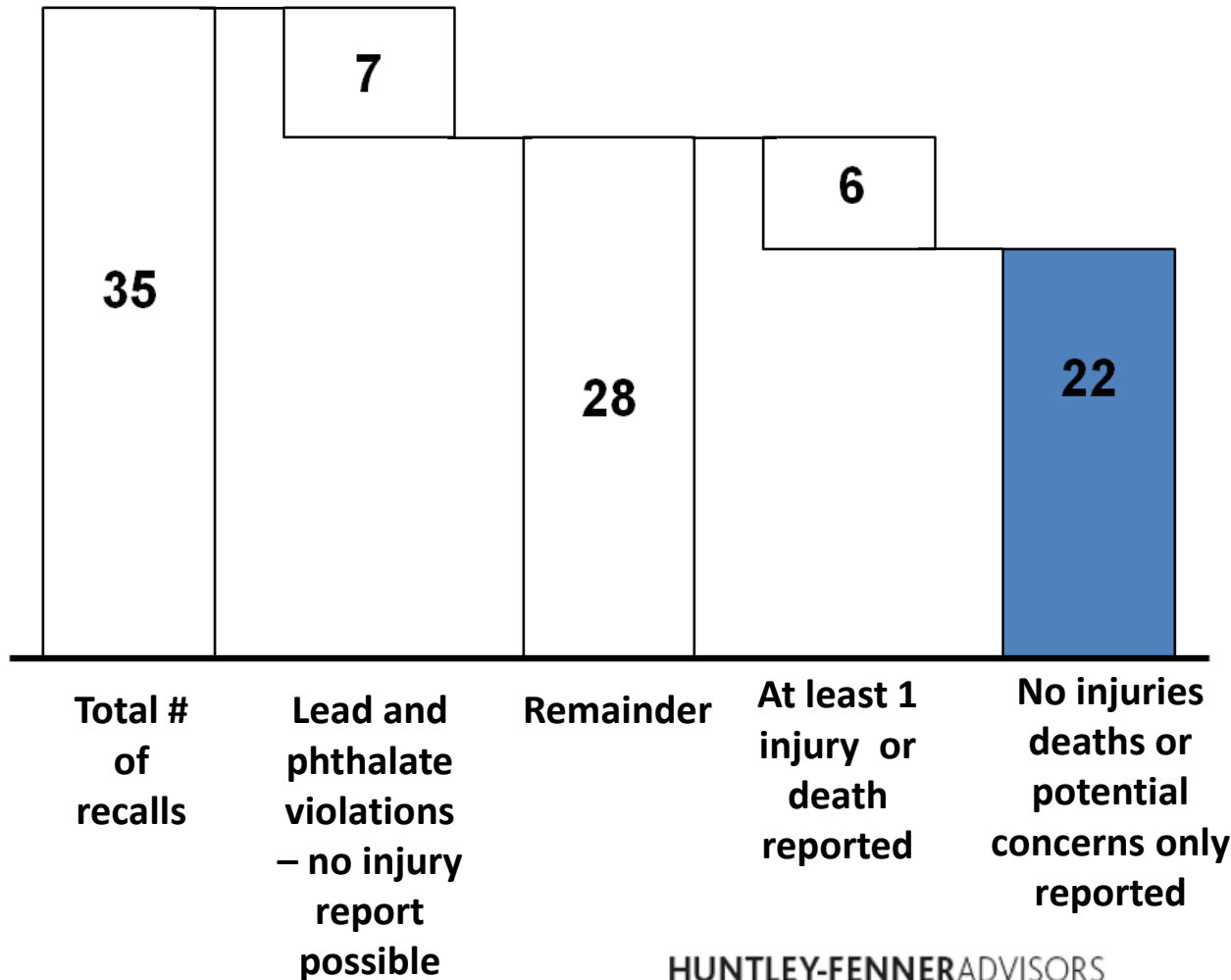
	Description	Example
Shape	3D bulky	ball, pen cap
Shape	3D angular	wood screw
Shape	2D solid	coin
Shape	2D non-solid	paper clip
Consistency	Conforming	balloon, plastic wrapping
Consistency	Rigid	coin, hard plastic, nut
Consistency	Semi-rigid	eraser, hot dog



Copyright © 2010

RECALLS ARE TRIGGERED BY POTENTIAL INJURIES MORE THAN ACTUAL INJURIES

2009 CPSC Toy recalls



Health
Canada

Santé
Canada

More than half of recalled products involve no injuries reported



Copyright © 2010

LAB CERTIFICATION or LEGAL COMPLIANCE CANNOT PROTECT YOU FROM RECALLS

Children's products

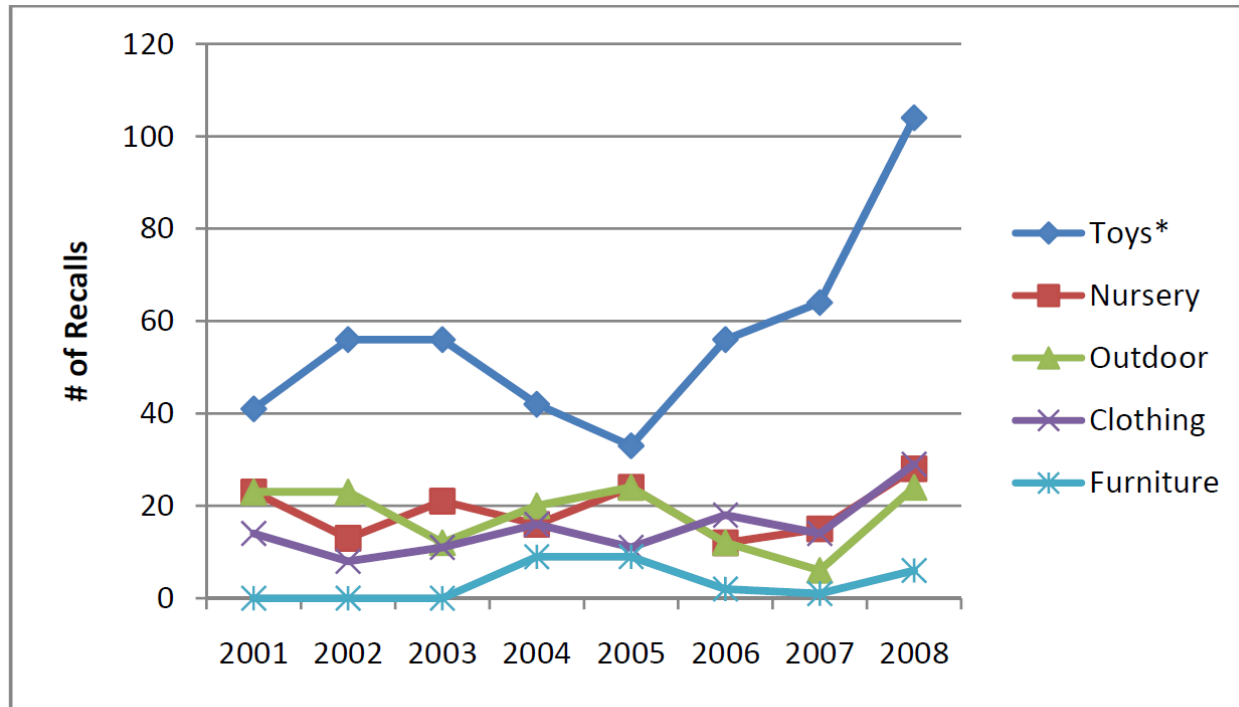


Figure 1: Recalled Products by Type: 2001-2008

Products would have been tested and certified before going to market

A CPHA IS A STRUCTURED PROCESS BASED ON INDUSTRY GUIDELINES



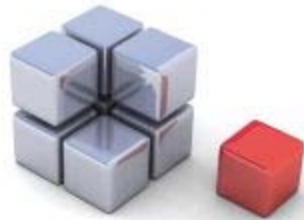
Toy Industry Association, Inc.
Leading the Growth and Health of the Toy Industry

Toy Safety Certification Program



International
Organization for
Standardization

Guidelines for child safety – ISO/IEC 50



RAPEX

KEEPING EUROPEAN CONSUMERS SAFE

Risk Assessment Guidelines for
Non-Food Consumer Products

... and historically connected to a
variety of FMEA and PHA standards:

- SAE J1739 (Automotive)
- ISO 14971 (Medical Devices)
- MIL-STD-882D (Military)
- ANSI/IEEE 352 (Nuclear)